

The Kia EV2.



Movement that inspires

Compact by design.



We believe in movement that inspires. Design that makes a statement. Technology that redefines expectations. The Kia EV2 reimagines electric mobility for urban lifestyles. With compact SUV proportions, flexible space, and smart connected features, it brings everyday confidence and effortless enjoyment to EV drives.



Exterior design.



Upright front profile

The EV2 pairs upright details with a wide stance. Vertical Daytime Running Lights and Star Map lighting enhance its dynamic look, while larger EV design cues evoke a strong, contemporary presence.

A bold SUV silhouette

Shaped for city driving, the EV2 is compact in length yet powerful in presence. Clean surfaces are paired with pronounced wheel-arch cladding and sharp, geometric window forms.

Striking alloy wheel options

The EV2 offers curated alloy wheel designs including distinctive 16" and 18" options, reinforcing its dynamic look and stance, while the GT-Line model features high-impact 19" alloys.

Clean rear design

Precision and simplicity define the EV2's rear styling. Pronounced shoulders and the taillights highlight its compact proportions while reinforcing a confident, modern look.



Seamless & smart technology.



Interior design.

- Open cabin with room for everyone.
- Customisable space for everyday life.
- Ambient lighting.
- Premium Sound System.



Panoramic triple-screen infotainment.

Experience a seamless digital cockpit. Kia's latest ccNC system combines three displays across the dashboard, delivering intuitive infotainment, navigation and climate control.

OTA Updates & Kia Upgrades

The EV2 evolves with you thanks to Over-the-Air (OTA) Updates that keep software current automatically.

Charging for everyone on board.

Powering devices on the move is simple in the EV2. A wireless charging pad keeps your smartphone ready to go, while fast USB-C ports in the front and the rear mean passengers stay charged up too.

[Discover More >](#)

Scan the QR code





Intelligent safety built in

The EV2 features a comprehensive suite of Advanced Driver Assistance Systems (ADAS)⁴. Anti-collision support helps detect risks early, highway assistance adds confidence at speed, and smart parking simplifies tight spaces. Bringing intelligent safety and greater ease to every drive.

Find the EV2 that fits you.

Equipped with a Front Wheel Drive powertrain and 42.2 kWh or 61 kWh battery, the EV2 delivers dependable all-electric range and efficiency. With four trims to choose from - Light, Air, Earth and GT-Line.

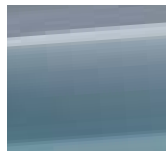
Body Colour Line-up.



Casa White



Deluxe White



Frost Blue



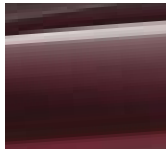
Morning Haze



Wolf Grey



Vanilla Blossom



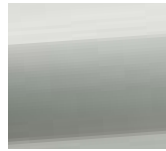
Magma Red



Penta Metal



Black Pearl



Ivory Silver (Matte)

Choice of Rims.



16" Steel Wheel



16" Alloy Wheel



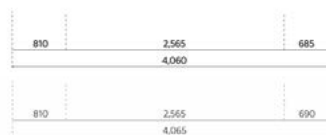
18" Alloy Wheel



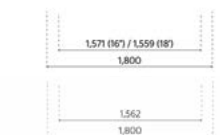
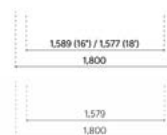
19" Alloy Wheel (GT-Line)

Dimension Sketch.

Kia EV2 Light, Air and Earth



Kia EV2 GT-Line



Want to know more? Visit www.kia.com.cy



Movement that inspires

REMITONIA CO. LTD

90 Omonias Avenue
3048 Limassol - Cyprus
Tel: 25576576
email: info@loutsiosgroup.com

Nicosia Showroom

Tel: 22464834

Larnaka Showroom

Tel: 24635125

MAY 2026

The models and specifications shown in this leaflet may vary from the models available in your market. Please contact your local Kia dealer for the most recent information.